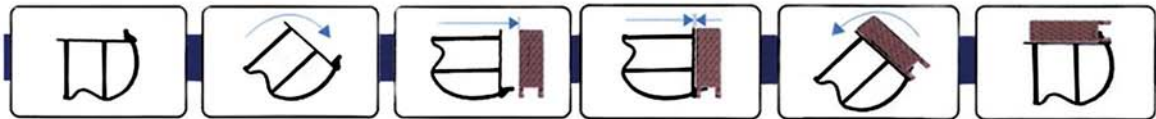


PRACTICAL DESIGN | FOLDING | EASY TO USE | RELIABLE



REFERENCIA REFERENCE	PESO NETO NET WEIGHT	MATERIAL MATERIAL	COLOR COLOUR	CARGA MAX. SWL	MEDIDAS / MEASUREMENTS					MEDIDAS PLEGADO FOLDED MEASUREMENTS
					A	B	C	D	E	
MX-437	25 kg 55.12 lb	Acero Steel	Negro Black	350 kg 771.62 lb	90 cm 2' 11.43"	100 cm 3' 3.37"	77 cm 2' 6.31"	90 cm 2' 11.43"	95 cm 3' 1.40"	100 x 20 x 90 cm 3' 3.37" x 7.87" x 2' 11.43"
MX-431	31 kg 68.34 lb	Acero Steel	Negro Black	350 kg 771.62 lb	130 cm 4' 3.18"	140 cm 4' 7.12"	78 cm 2' 6.70"	92 cm 3' 0.22"	97 cm 3' 3.19"	140 x 20 x 92 cm 4' 7.12" x 7.87" x 3' 0.22"
MX-431/L	33 kg 72.75 lb	Acero Steel	Negro Black	350 kg 771.62 lb	133 cm 4' 4.36"	140 cm 4' 7.12"	78 cm 2' 6.70"	92 cm 3' 0.22"	138 cm 4' 6.33"	140 x 23 x 92 cm 4' 7.12" x 9.06" x 3' 0.22"