

TORRES DE ELEVACIÓN PARA LA INDUSTRIA DEL ESPECTÁCULO

LIFTING TOWERS FOR THE ENTERTAINMENT INDUSTRY

TRAVERSENLIFTE UND PA TOWERS

ПОДЪЁМНИКИ ДЛЯ ИНДУСТРИИ РАЗВЛЕЧЕНИЙ

TORRI D'ELEVAZIONE PER L'INDUSTRIA DELLO SPETTACOLO

PIEDS ÉLÉVATEURS



CE

www.guil.es
MADE IN SPAIN

GUIL®



P.I. La Creu C/ Ismael Tomás Alacreu, 28
C.P.46250 L'Alcúdia (VALENCIA) SPAIN

Tel.+34 962996500
Fax. +34 962540833

info@guil.es
sales@guil.es



GUIL - YOUR EUROPEAN LIFTING TOWER MANUFACTURER

ELC WIND UP LIGHTING STANDS

ELC-500

- +↑ 3,20 m
10' 5.99"
- ⬇️ 100 Kg
220.46 lb
- ↓ 1,70 m
5' 6.92"
- ⚖️ 14 Kg
30.86 lb
- 🔧 450 kg
992.08 lb
- S **ASB SYSTEM**



ELC-502

- +↑ 4,20 m
13' 9.36"
- ⬇️ 100 Kg
220.46 lb
- ↓ 1,70 m
5' 6.92"
- ⚖️ 22 Kg
48.50 lb
- 🔧 450 Kg
992.08 lb
- S **ASB SYSTEM**

ELC TELESCOPIC LIFTING TOWERS (TOP-LOADER)



Automatic Safety Blocking System Guarantees maximum reliability and protection in the lifting and lowering process.



5 mm thick perforated metal strip, welded for extra safety. Special Epoxy anti-scratch paint finish (for outdoor use).



Auto-brake Winches (AL-KO) Comply with CE Machinery Directives.



Knobs to block the telescopic sections. Protective cover to prevent the cable from coming out of the self-lubricated pulleys.



Special non-rotating steel wire rope, with steel core, 3 times the strength required. Top section fitted with a reinforcing ferrule.



Rectangular legs with double ferrule to reinforce screw jack holes. Leveller screw jacks with double thread for a quick adjustment. Chrome foot plates with non-slip injection moulded rubber pads.



Base provided with spirit level (for correct vehicle adjustment) & fitted with 4 heavy-duty wheels (Ø100mm) with steel fastening plates secured by 4 bolts each.

ADAPTORS



+↑ Maximum Height

⬇️ Maximum Load

-↓ Folded Dimension

⚖️ Net Weight

🔧 Auto-brake Winch

S Safety

ELC-503

- +↑ 3,20 m
10' 5.99"
- ⬇️ 125 Kg
275.58 lb
- ↓ 1,45 m
4' 9.09"
- ⬇️ 24 Kg
52.91 lb
- ⚙️ 450 kg
992.08 lb
- S **ASB SYSTEM**



CERTIFIED
BGV C1

ELC-503G

- +↑ 5,00 m
16' 4.85"
- ⬇️ 100 Kg
220.46 lb
- ↓ 1,99 m
6' 6.35"
- ⬇️ 29 Kg
63.93 lb
- ⚙️ 500 Kg
1102.31 lb
- S **ASB SYSTEM**



ELC-504

- +↑ 4,22 m
13' 10.14"
- ⬇️ 125 kg
275.58 lb
- ↓ 1,44 m
4' 8.69"
- ⬇️ 42 Kg
92.59 lb
- ⚙️ 450 kg
992.08 lb
- S **ASB SYSTEM**



ELC-504G

- +↑ 5,20 m
17' 0.72"
- ⬇️ 125 kg
275.58 lb
- ↓ 1,70 m
5' 6.92"
- ⬇️ 46 Kg
101.41 lb
- ⚙️ 450 kg
992.08 lb
- S **ASB SYSTEM**



ELC-505

- +↑ 5,20 m
17' 0.72"
- ⬇️ 200 kg
440.92 lb
- ↓ 1,75 m
5' 8.89"
- ⬇️ 75 Kg
165.35 lb
- ⚙️ 900 Kg
1984.2 lb
- S **ASB SYSTEM**



ELC-506

- +↑ 5,20 m
17' 0.72"
- ⬇️ 250 kg
551.15 lb
- ↓ 1,75 m
5' 8.89"
- ⬇️ 95 Kg
209.44 lb
- ⚙️ 900 Kg PLUS
1984.2 lb
- S **ASB SYSTEM**





BGV C1



LINE ARRAY

* Available in natural aluminium & painted in black



ULK B Stabiliser braces with screw jacks



Adaptors to fly Line Array systems



360°

Swivel adaptors to fit trusses to ULK towers



| | ULK 400 | ULK 500 |
|----|---------------------|---------------------|
| ↑ | 5,00 m 16' 4.84" | 6,00 m 19' 8.22" |
| kg | 200 kg 440.92 lb | 200 kg 440.92 lb |
| ↓ | 1,70 m 5' 6.92" | 1,70 m 5' 6.92" |
| kg | 900 kg 1984.2 lb | 900 kg 1984.2 lb |
| kg | 112 kg 246.92 lb | 122 kg 268.96 lb |

More mast overlap.



50x50mm Reinforced forks > Max.strenght



COMPACT DESIGN. Fold-away handles with Ø100 mm wheels for horizontal transportation & loading into vehicles.



Mast Sequence Control System (MSC)



4 Stabiliser braces for greater lift stability. Base fitted with spirit level & 4 wheels (Ø100mm) with steel fastening plates secured by 4 bolts each.



Automatic Safety Blocking System (ASB)



Auto-brake Winch (AL-KO: 900 kg)
Complies with CE Machinery Directives.



Internal Pendulum Brake System (IPB)



Mast Section Unblocking System (MSU)



U-shaped steel plate to reinforce the securing of the mast sections to the base.



Reinforced aluminium mast sections (EN-AW 6082 T6). Cable resend system with steel pulleys.



Galvanised non-rotating steel wire rope. Construction: 19x7 Over-sized roller pulley.



Leveller screw jacks with double thread for a quick adjustment. Chrome foot plates with non-slip injection moulded rubber pads.

1630 mm



Ref. **ULK 600 & ULK 600XL**
COMPACT DESIGN



| | ULK 600 | ULK 600XL |
|-------------------------------------------------------------------------------------|-----------------------|-----------------------|
| +↑ | 6,00 m 19' 8.22" | 6,00 m 19' 8.22" |
| kg ↓ | 300 kg 661.39 lb | 350 kg 771.62 lb |
| -↓ | 1,63 m 5' 4.17" | 1,63 m 5' 4.17" |
|  | 1700 kg 3747.86 lb | 1700 kg 3747.86 lb |
| kg | 204 kg 449.74 lb | 217 kg 478.40 lb |



Fitted with 4 stabiliser braces for greater lift stability.



Automatic Safety Blocking System (ASB)

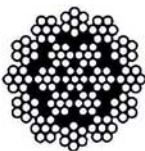


Ref. **BULL500/2**

Auto-brake Winch (1700 kg) with 2 detachable handles. Complies with CE Machinery Directives.



Internal Pendulum Brake System (IPB)



Reinforced Aluminium Sections (EN-AW 6082 T6). Special galvanised non-rotating steel wire rope with steel core. Construction: 19x7+0



Cable resend system with steel pulleys.



4 heavy-duty wheels (Ø100mm) with aluminium core & steel fastening plates (secured by 4 bolts each). Base fitted with spirit level.



BGV C1

| ULK 650 | ULK 800 | ULK 650XL | ULK 800XL |
|-----------------------|-----------------------|-----------------------|-----------------------|
| 6,50 m 21' 3.91" | 8,00 m 26' 2.96" | 6,50 m 21' 3.91" | 8,00 m 26' 2.96" |
| 300 kg 661.39 lb | 280 kg 617.29 lb | 400 kg 881.85 lb | 350 kg 771.62 lb |
| 1,98 m 6' 5.95" | 1,98 m 6' 5.95" | 1,98 m 6' 5.95" | 1,98 m 6' 5.95" |
| 1700 kg 3747.86 lb | 1700 kg 3747.86 lb | 1700 kg 3747.86 lb | 1700 kg 3747.86 lb |
| 198 kg 436.52 lb | 213 kg 469.58 lb | 212 kg 467.38 lb | 231 kg 509.27 lb |



Mast Sequence Control System (MSC)



Mast Section Unblocking System (MSU)



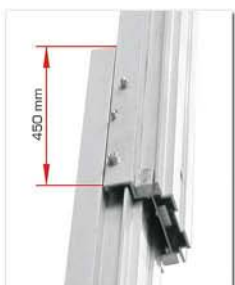
Leveller screw jacks with double thread for a quick adjustment and chrome foot plates with non-slip injection moulded rubber pads.



Base fitted with 2 heavy-duty Ø200mm wheels (with bearings) to ease its horizontal movement and its loading in vehicles.



U-shaped steel plate to reinforce the securing of the mast sections to the base.



More mast overlap for greater resistance.



Fold-away handles with Ø100mm wheels for horizontal transportation & loading into vehicles.



60 x 60mm Reinforced forks. Maximum strength. Adjustable & detachable design. Fork carriage with two positions.

RIGGING TOWERS

LIFTING YOUR SOUND TO REACH EVERYONE

CERTIFIED



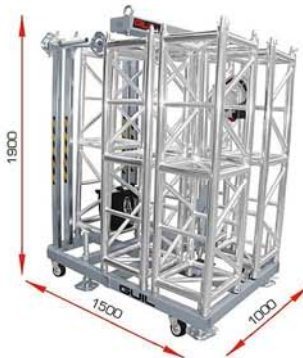
TMD-545

500 Kg
1102.3 lb
6,43 m
21' 1.15"



TMD-560

800 Kg
1763.70 lb
7,88 m
25' 10.24"



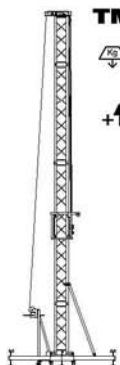
✓ ALL COMPONENTS INCLUDED:
2 TONNE CHAIN HOIST, CHAIN BAG
& AUTO-BRAKE WINCH

✓ COMPONENTS INCLUDED:
AUTO-BRAKE WINCH WITH 2
CRANK HANDLES & CHAIN BAG
(MOTOR NOT INCLUDED)

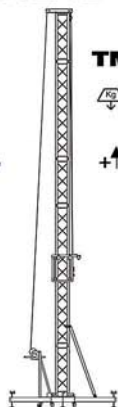


- ✓ COMPACT DESIGN > SAVE ON SPACE FOR TRANSPORT & STORAGE
- ✓ QUICK & EASY ASSEMBLY

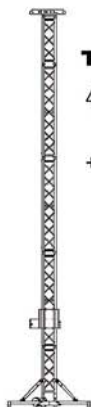
MODULAR TOWERS



TMD-543
400 Kg
881.85 lb
7 m
22' 11.60"



TMD-543/8
400 Kg
881.85 lb
8 m
26' 2.96"



TMD-547
800 Kg
1763.70 lb
8 m
26' 2.96"



TMD-548
2000 Kg
4409.25 lb
10 m
32' 9.70"



TMD-549
1500 Kg
3306.93 lb
12 m
39' 4.44"

AMD-448
800 Kg
1763.70 lb
6,6 m
21' 7.84"

AMD-449
600 Kg
1322.77 lb
8,6 m
28' 2.58"

